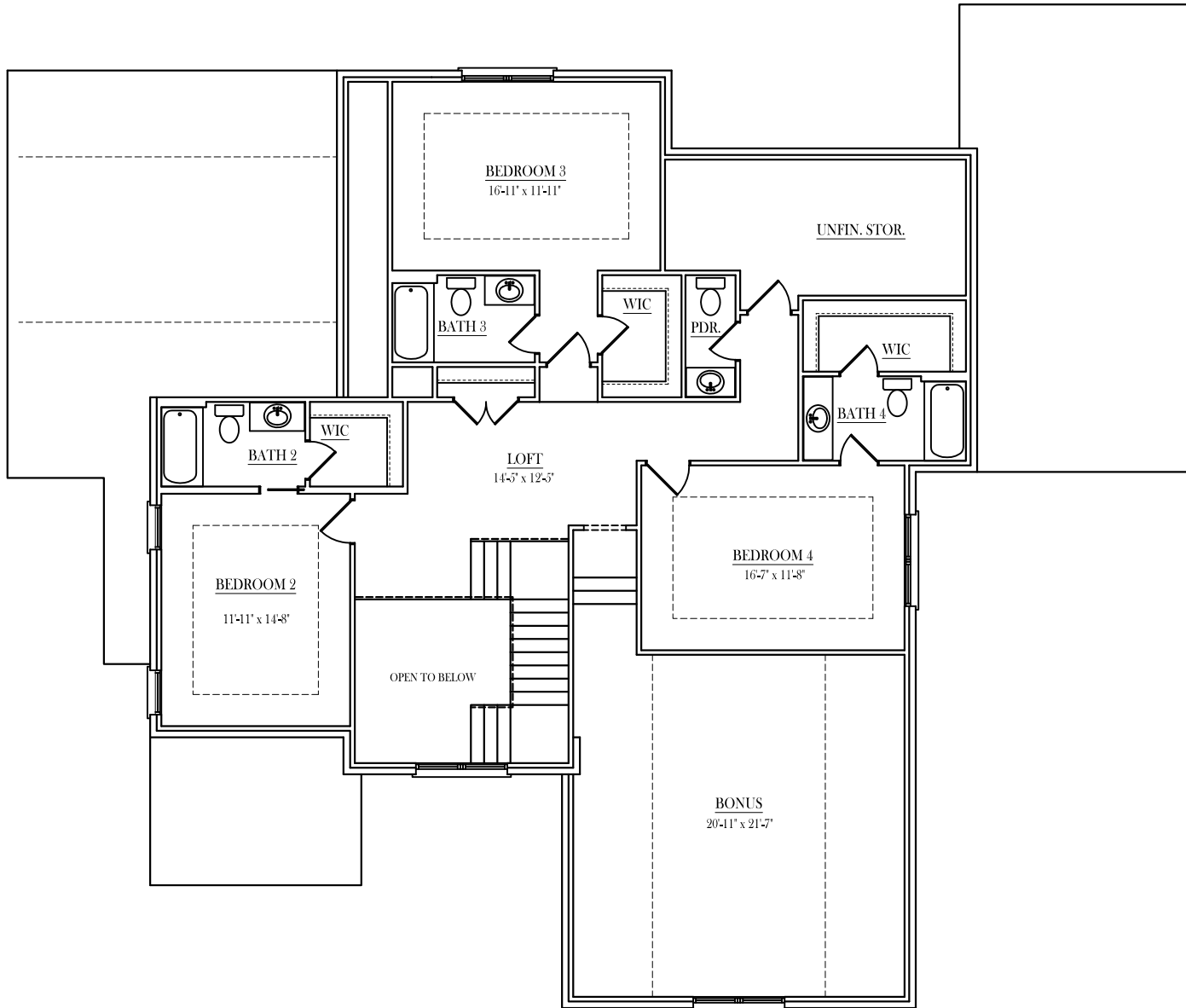


APPROX. SQ. FT.

FIRST FLOOR	= 2537 SQ FT
SECOND FLOOR	= 1790 SQ FT
TOTAL HEATED	= 4327 SQ FT
UNF. BSMT	= 2256 SQ FT
MECH.	= 195 SQ FT
GARAGE	= 740 SQ FT
PORCHES	= 672 SQ FT
TOTAL COV.	= 8190 SQ FT



BEDROOM 3
16-11' x 11-11'

UNFIN. STOR.

BATH 3

WIC

PDR

WIC

BATH 4

BATH 2

WIC

LOFT
14-5' x 12-5'

BEDROOM 2
11-11' x 14-8'

OPEN TO BELOW

BEDROOM 4
16-7' x 11-8'

BONUS
20-11' x 21-7'